



## BMW 5 Series

2004 - 2010

## BMW 5 Series

2004 - 2010



The BMW 5 series and 6 series use an unusual wiper connector that causes a lot of confusion in the aftermarket. The original blade to arm attachment looks like **FIGURE 1**.

While it looks like a derivative of the Pinch Tab arm, the lower prongs have nothing to do with blade retention.

It connects at two points:

1. The center tab under the top button;
2. The front tab that looks like the front of a "pinch tab" arm.

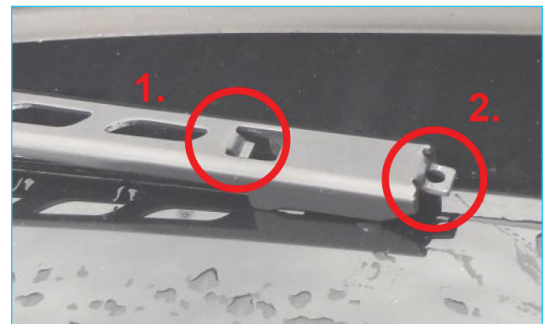
In order to remove the blade, push down the button in area **1.** and slide the blade forward.

The tabs are clearer in **FIGURE 2**.

In order to connect to this arm, your adaptor probably has to secure these two points. We are revising our listings and referring to this arm as **"BMW"** since no other vehicle model uses this style arm.



**FIGURE 1**



**FIGURE 2**